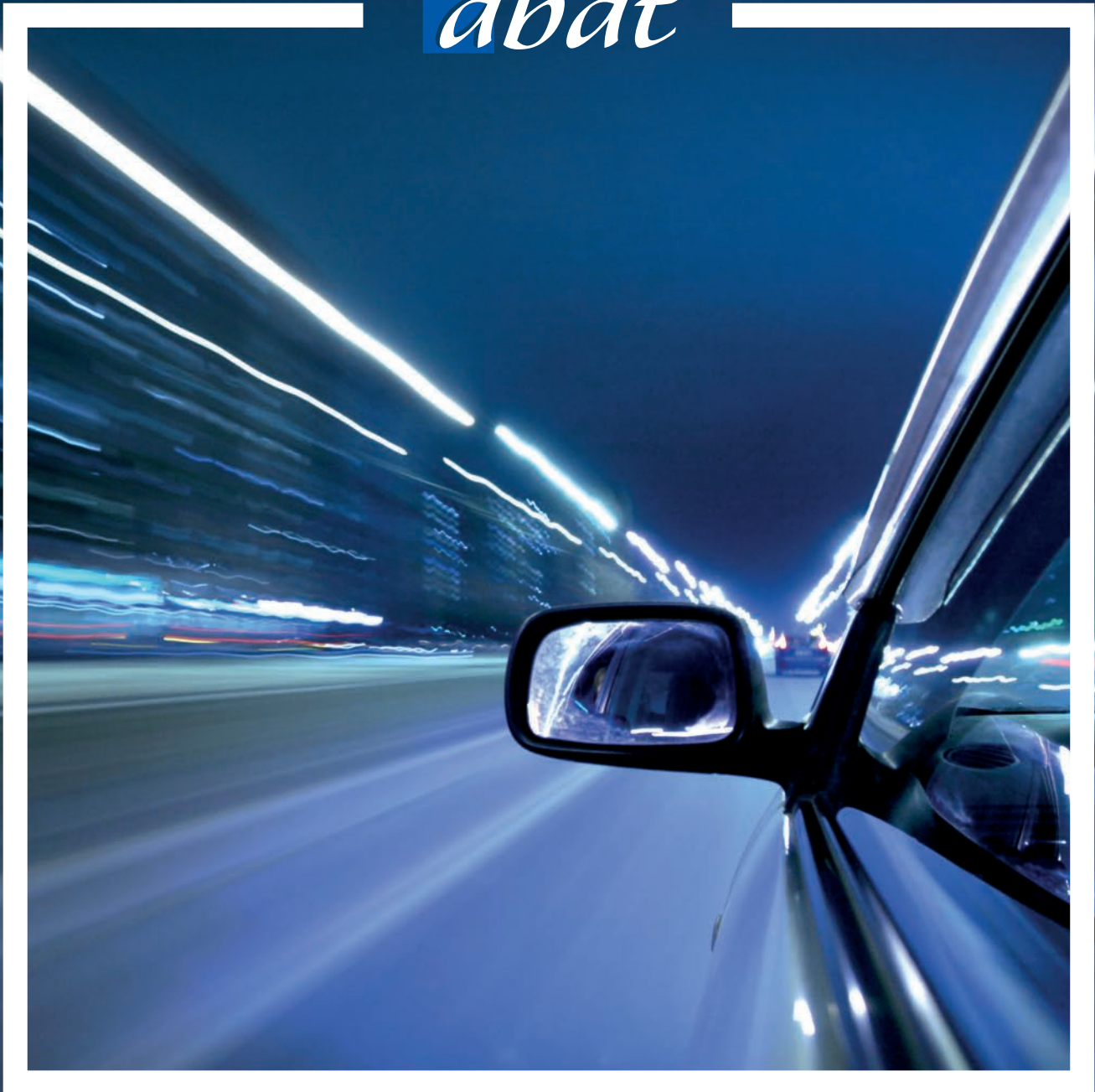


**abat**



From idea to reality

This is abat

# We stand for successful SAP solutions.

abat is an international SAP service provider and product supplier, who optimizes business processes and develops them further with its own solutions. We provide these services primarily in the automotive, discrete manufacturing and logistics sectors. We can also support you in the areas of sustainability management and information security.

abat was founded in 1998 as Act GmbH and is now represented Germany-wide with locations in Bremen, Munich, Oldenburg, St. Ingbert, Walldorf and Wolfsburg. We also have subsidiaries in the US, Mexico, and Belarus for better on-site management. We are currently working with over 700 employees in a wide variety of customer projects – starting with the alignment of IT to business processes and development to the implementation and maintenance of standard solutions.

abat is a SAP Gold Partner and development partner in the SAP Partner Edge Program for Application Development and also has recognized expertise for automotive, travel and transportation, supply chain management, consumer products and SAP S/4HANA.



We regularly receive awards in our business class as one of the best employers in Germany, we also carry the TOP-Company and OPEN-Company seals of approval of the job evaluation platform kununu.com and were awarded the Great Place to Work in 2019 and received a Top Job seal again in 2021.



## In-depth industry knowledge leads the way

In the automotive sector, we work for many manufacturers such as Audi, BMW, Daimler, MAN, Porsche, Volkswagen and Qoros. In addition, abat developed the PLUS software, which is used to control the production processes at Daimler, Qoros and nobilia. For logistics companies and logistics service providers abat offers solutions to optimize the supply chain, e.g. in intralogistics and transport management. Here we work for Brose, Bosch, Daimler, DHL, Thyssenkrupp and Boehringer Ingelheim.



We support our customers in the digital transformation by expanding our portfolio at an early stage to include innovative cloud solutions such as the SAP S/4HANA Private Cloud Edition. In this way, we can optimally support our customers in realizing their modern IT strategy and in the designing and building of complex hybrid system landscapes.

In the area of SAP Customer Experience and CRM solutions, we support you in creating a solid customer journey in order to deliver unique customer experiences and thus sustainably develop your company.



In the area of Product Lifecycle Management (PLM) we support our customers with the goal to increase process efficiency and the quality of decisions through the consistency of product data.

In sustainability management abat offers comprehensive consulting services and additional support in sustainability reporting via our ID-Report software.

In the area of information security, we support companies from all sectors in preparing for certification in accordance with ISO 27001, TISAX® and IT-Grundschutz standards. For the ISO 27001 and TISAX® standards, our consultants also act as auditors for accredited certification bodies.

## Nearshore services

SAP services with cost advantages - without sacrificing quality. For more than 15 years, abat has been successfully providing consulting, software development and basic services with experienced and qualified specialists from its locations in Minsk, Belarus and Puebla, Mexico. For us, nearshoring means passing on cost advantages to our customers, while strictly adhering to all current quality and safety standards. Our nearshoring locations are certified according to ISO 27001: 2017.

Thanks to the close cooperation between our on-site consultants and the nearshore teams, we offer smooth implementation, support and maintenance of your projects in all SAP architectures.

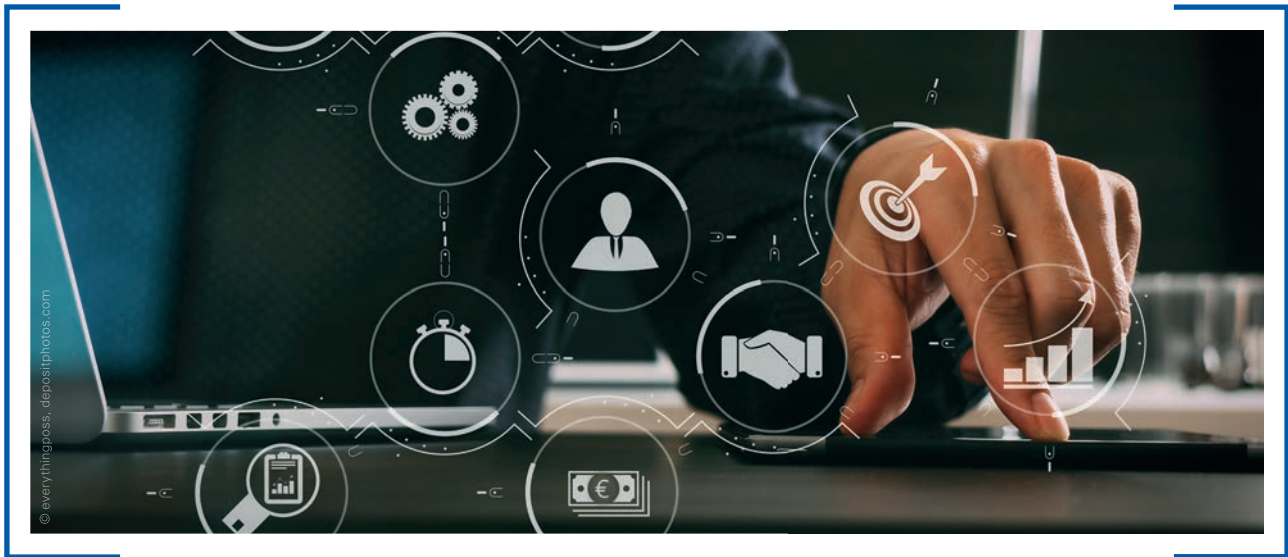
Of course, we also speak the language of our customers at BELabat and MEXabat: we constantly invest in the improvement of our team's language skills, which is why our employees speak both German and English in addition to their respective national language. For us, current standards in planning and implementation of design and architecture, security and stability are the basic requirements for a successful nearshoring concept.

Upon request, the transfer to our proven Application Management enables long-term, effective and cost-optimized maintenance of your systems, even beyond project periods.



## Transition to SAP S/4HANA

abat supports you on your way to SAP S/4HANA - with our process model for a well-founded decision-making process regarding the implementation alternative that suits your company. With our field-proven knowledge, we work with you to create an evaluation matrix based on your individual preferences. abat supports you from the beginning with the implementation strategy and implementation of the optimal solution for you up to the support and further development of your processes. With the SAP Activate project method, we bring your processes into a SAP system right from the start of the project - in this way we shorten the project duration and increase the degree of standardization of your system.



## The overall goal is to increase your performance

We consult our customers and deliver efficient overall solutions - by optimizing processes along the entire supply chain. We start with development and go on through logistics and production to customer experience management. We take over the conception of process designs as well as the software implementation, the integration into corporate structures and the application management after implementation.

An extract from our range of services:

- Implementation, conception or change to SAP S/4HANA Enterprise Management
- Further development of your user interface under SAPUI5
- Project management (e.g. SCRUM, SAP Activate, etc.)
- Production planning and control with our in-house development MES PLUS
- Control of the logistical supply of plants
- Warehouse management with SAP WM and SAP EWM or embedded EWM in SAP S/4HANA
- Transport management with SAP TM or embedded TM in SAP S/4HANA
- Development, monitoring and rollout of international templates
- Custom development based on the latest technologies, on-site and / or nearshore
- System management and optimization
- Application management services for international systems
- Integration of SAP solutions in complex, heterogeneous customer systems
- Implementation of cloud-based SAP CX and CRM solutions (Sales and Service) - with integration into your SAP S/4HANA or ECC
- Holistic consulting on the solution architecture with consideration of cloud and on-premise solutions
- Support in selecting the correct and necessary cloud licenses
- Connection of third-party solutions such as Amazon Web Services (AWS) or Microsoft Azure to your SAP landscape
- Consulting on building innovative solutions based on New Technologies such as Artificial Intelligence, Internet of Things, Analytics and Blockchain
- Sustainability management and sustainability reporting
- Sustainability-oriented reporting through self-developed software solution ID-Report
- Consulting services in the area of information security
- Specialists in product structure management, especially in the field of iPPE and PVS
- PLM consulting in the field of SAP PLM and Teamcenter
- System-neutral integrative process consulting PLM-ERP-MES



## Consulting by abat is the guarantee for success



Our consultants have many years of international experience, develop a comprehensive optimization of your process, and implement emerging concepts using standard SAP functions or by programming customer-specific add-ons. All abat employees are loyal to you, communicate openly and respond to your Individual needs. In addition, abat offers absolute transparency in terms of offers, cost structure and project management. This gives you a comprehensive overview of the high quality of time and budget. Last but not least, our company culture also guarantees you permanently successful projects. Do you have any questions, specific problems or need to optimize your processes? As an innovation and technology scout, abat can also develop, present, and implement new solutions for you in a transparent and comprehensible way.

## Awards and Certificates

The abat group has the following certificates and awards:

- SAP Gold Partner
- SAP Service Partner (Partner Edge Service)
- SAP Development Partner (Partner Edge Build)
- SAP Sales Partner (Partner Edge Sell)
- as SAP Service Partner within the SAP Early Adopter Care Program active (previously RampUp)
- SAP Recognized Expertise in
  - Automotive (Germany)
  - Supply Chain Management (Germany)
  - Travel & Transportation (Germany)
  - Consumer Products (Germany)
  - SAP S/4HANA (Germany)
- Top Job Siegel 2013, 2015, 2017, 2021
- Kununu Top Company
- Kununu Open Company
- Förderer der neuen Wirtschaft
- Happy Working Place
- Great Place to Work
- FOCUS magazine: among the top 100 employers of medium-sized companies 2021

### Contact:

**abat AG**  
An der Reeperbahn 10  
28217 Bremen  
Germany

+49 421 4304-60  
info@abat.de  
www.abat.de

### North America:

**abatUS LLC**  
271 17th Street NW  
Suite 1750  
Atlanta, GA  
USA 30363

+1 205 588 81 58  
info@abat-us.com  
www.abatusa.com

### Mexico:

**MEXabat**  
Calz. Zavaleta 3922 4to-6  
Santa Cruz Buenavista  
Puebla, Pue. CP. 72170  
México

+52 222 284 95 48  
victa.wewerinke@abat.de  
www.abat.mx