

The Softeon Advantage

Innovative Supply Chain Solutions



Softeon

Softeon – System house for supply chain management

Who calls himself a specialist has to offer something special to his customers. Our name stands for logistic know-how, technical advance and balanced budgets.

The mastery of supply chains is a deciding competitive factor on globalized markets. The winner of the footrace for customers is the one who copes with material flow as well as information flow and who is also able to react rapidly on changing demands. Softeon supports companies with

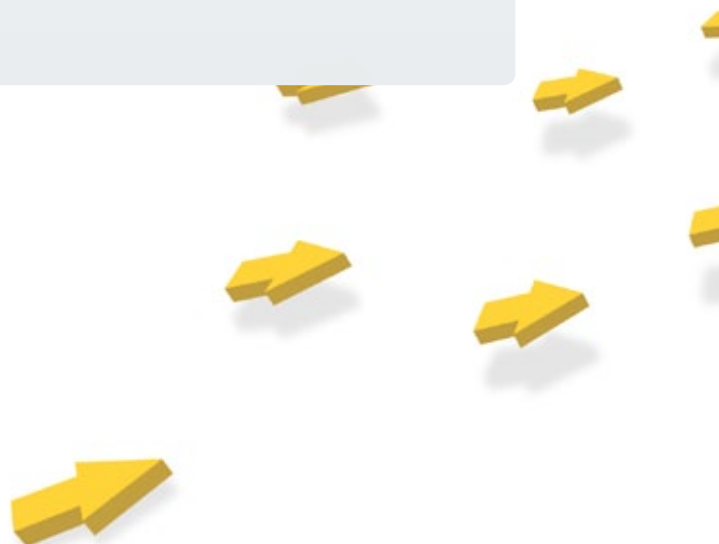


flexible and innovative software-solutions for supply chain execution and supply chain planning.

As a system house for logistics software Softeon has earned a good name on an international level. Globally operating companies as Sony, DB Schenker and many more are counted among our customers. Numerous enterprises from the most different industries already rely on Softeon's know-how.

Your company benefits from our supply chain management systems (SCM) and services:

- ✓ Softeon **minimizes** total cost of ownership
- ✓ Softeon **facilitates** investment decisions
- ✓ Softeon **accelerates** IT implementation
- ✓ Softeon **boosts** productivity in purchasing, warehouse and distribution
- ✓ Softeon **promotes** power to compete
- ✓ Softeon **guarantees** rapid return on investment



First-class quality factors of your logistics software-provider

✦ Industry-specific solutions

Are you in need of IT specialists for your branch? Softeon offers industry-sector-specific logistics know-how and logistics software for companies from foodstuffs, drinks, 3PL, high tech, consumer goods, document management, wholesail and retail, etc.

✦ Customer Focus

Are you looking for an IT service organisation which makes the interests of your company the center of its actions? Softeon's priority is the achievement of customer satisfaction. Our staff members always go for faithful and productive teamwork.

✦ Innovation

Are you looking for a state-of-the-art system house? Softeon places on innovation and forwards technological developments - for the one-upmanship of your company.

✦ Reliability

Are you reckoning on a partner who stands to date and budget? You can count on and plan with Softeon. We support your investment decisions with maximal transparency. We work on-time and on-budget.

✦ Return on Investment

Do you emphasize a quick amortization of your investment? Softeon's logistics software is based upon a robust architecture, elevates the flexibility of your company permanently and reduces the total cost of ownership (TCO).



Integrated End-to-end-solution

Softeon offers perfect solutions for the optimization of tactic and supply chain execution. An integrated end-to-end-solution with high functionality.

Talking about IT solutions for supply chain management (SCM) Softeon anticipates it's customers every wish. We offer a modular end-to-end-solution, with which you can assist and optimize all business sectors and processes of supply chains on a sustained basis. The individual modules complete one another in an optimal way. They are adaptable to work processes. This capacity of integration guarantees the effective utilization of our SCM-modules and thus rapid amortization of investments.

Different partial systems belong to the end-to-end-solution of Softeon's SCM-suite, i. e. for warehouse, disposition, order fulfillment or distribution- and transport-management. Besides modules for the account of logistics we offer special solutions for the billing of providers of logistics (3PL). Further modules are at hand for work- and -resource management, field installation and kitting as well as for the prognosis of future demands. Your company will profit from our industry-specific-solutions.



Softeon's WMS product more than met our requirements and they essentially became a partner in our success. It's refreshing to be associated with people that actually do what they say they can do and people who truly have customer satisfaction as their number one priority."



Kirk Baldwin,
V.P. Operations
Hoffman Beverage Company

The modular architecture of Softeon's SCM-suite has many pros for companies. Our customers determine individually which modules and functions they require. This way we can cope with warehouse-specific problems as economically as with the implementation of a complete order-to-delivery-solution while our customers remain flexible in every respect. Softeon's product suite accommodates comfortable wiggle room for your company at any point in time in favor of an acclimatization to changing market conditions and business processes.

Softeon's SCM-suite is an attractive bid for all companies which emphasize sophisticated IT solutions when it comes to supply chain planning and execution. Softeon is committed to a filed diversity in order to picture complex processes.

Robust Platform

The modern architecture of Softeon's logistics software pays double for customers. They achieve efficiency gains and flexibility.

Softeon develops IT solutions at the highest stage. Behind the technological pioneering task stands a highly qualified team of logistics experts, IT specialists and software engineers. A state-of-the-art Softeon software-suite is their labor.

With good cause: the architecture of our IT solutions is the guarantee of our customers satisfaction. Companies profit from the robust architecture of our IT solutions with respect to supply chain execution, maximize their flexibility and minimize costs.

Softeon's software-solutions are continually web-based. All modules rest upon a Service-Oriented Ar-

chitecture (SOA). Our systems are compatible with the most diverse data banks and platforms including the Java Platform Enterprise Edition (J2EE). Integrated into the architecture are an event- and a task-management. The support of RF/RFID as of language based technologies (i. e. Pick-by-voice) serves optimizing warehouse administration and consignment.

Softeon appears flexible also at reporting and acts with accordance to the needs of each customer. Reports can be written as pdf, html or as excel-charts and can be sent via e-mail.

Web-based is more than web-suitable

- ✓ **safe data-access via intranet, extranet or internet**
- ✓ **central attendance and administration via browser**
- ✓ **system access without client-solution and software-installation on-site (zero-footprint-approach)**
- ✓ **data-exchange with vendors and clients in real-time**
- ✓ **visualization of SCM-processes for more transparency**

Softeon raised the bar on top of the market for logistics software. We are at most adaptable to the business processes of our customers and uncompromising as to the functionality and dependability of IT solutions.

Intelligent Architecture

At Softeon companies get exactly the modules they need for their supply chain execution.

🚩 Warehouse Management System (WMS)

With Softeon's WMS companies get a grip on all aspects of their goods receipt and inventory management. Processes like goods receipt, storage, cross-docking or inventory can be actuated, supervised and evaluated in real-time. Analyses of warehouse capacity utilization, single space occupancy and of stock can be visualized in real-time. Be it order picking, shipment, dispatch, replenishment: Softeon's WMS-module stands the test as high-power organisational instrument as well as guarantee for an efficient order fulfillment. It offers an amplitude of functions and is highly configurable. Softeon's WMS increases your warehouse productivity, control and customer service.

🚩 Order Management System (OMS)

Our OMS cleans up order management orderly. From order entry across pricing, sales deal and credit check all the way to placing the goods at the disposal and mail-order settlement each step is controlled, documented and transacted. Having to deal with extreme transaction volumina the scalable OMS of Softeon shows it's full efficiency.

🚩 Distributed Order Management System (DOMS)

DOMS is a rule based order-distribution-system. Orders are passed through different stages as, for instance, acquisition, validation and segmentation. The process

flow is defined beforehand. Orders can be placed centrally on different locations and passed on to each warehouse management system respectively.

🚩 Billing Management System (BMS)

BMS is a comprehensive tool for all chief operating officers. Softeon considered all details and makes even highly complex business transactions possible, as in the fields of delivery, goods receipt, warehouse activities, goods issuing, distribution, dispatch and transport.

🚩 Ressource Management System (RMS)

RMS is an operational tool for all chief operating officers. With this module you plan the assignment of personnel, the application of equipment on the basis of real incidental work. The RMS automatically takes relevant job norms into account. To be precise: if you as chief operating officer determine which orders are released and which resources are inserted you can also take into account the company specific overtime arrangements.

🚩 Assembly & Kitting Management System (AMS)

The AMS-module actuates processes of assembling as well as deassembling. Multi-level bills of materials determine components and materials which are to be brought together. The procurement of commodities and components can be triggered automatically.



✦ Transportation Management System (TMS)

The TMS-module optimizes the planning of transport processes in the supply system and in dispatch by means of a high-capacity data processing in real-time. Among the components are, i. e., the planning of truckload and route of delivery.

✦ Yard Management System (YMS)

With YMS you always keep your factory premises, loading platforms and transport means in view. By graphic preparation of location data the module offers a perfect tool for the supervision and administration of trailers and containers. It's functions provide for an all-embracing support of delivery and reception of conveyances. These include perhaps the placing of delivery time-slots, gate seizure, registration and deregistration, advance tests or analysis of deterioration.

✦ Forecast Management System (FMS)

The FMS is a high-capacity prognosis system for the planning of future order developments. Thereby the FMS also measures the exactitude of the prognoses. Thus your company is able to serve the customer demand in an optimal way. The right products and amounts are at disposal at the right point in time. Backlogs are avoided simultaneously.

✦ Agile Demand Planning System (ADPS)

With ADPS Softeon offers a versatile planning tool for stock optimization, stock- and fresh supply-plans, purchasing and the management of sales campaigns and events. With ADPS companies reach their target service grade and minimize costs and security stocks over the whole supply-chain. This is also true for product launches or badly predictable products. ADPS accesses short-hand demands as POS-data or stock-levels of retailers (demand sensing).



Softeon's solution is adaptable and scalable to our business needs, and we have deployed the WMS solution in all our DCs and manufacturing facilities. The advanced web-based architecture provides real time inventory tracking and visibility across all warehouses. Softeon also provides tremendous flexibility in their software to adapt to whatever unique requirements a company may have."

Reliable

Michael R. Fee ,
V.P. Marketing & Sales Operations
Reliable Automatic Sprinkler Co., Inc.

Powerful Tools

Softeon offers companies singular features for a higher performance in warehouse and distribution.

🚩 Billing Solution:

Flexible accounting of logistics activities

Softeon's account module sets on maximal flexibility, in order to capture and clear all logistics activities in your company. The account module is available independently (stand-alone) or integrated into Softeon's Warehouse Management System.

At third-party logistics providers (3PL) the billing module shows it's full potential. Here everything depends on amplified functions for the documentation of customer specific activities. Softeon offers substantial possibilities for the account on multiple levels and via several models. Companies in other vertical industries, such as consumer goods, retail, direct to consumer, wholesale distribution and spare parts distribution require these advanced costing and billing capabilities for their logistics division.

🚩 Inventory Planning & Optimization:

Optimizing stock

The tool inventory Planning & Optimization improves customer service. It maintains the right inventory at various nodes in a supply chain network. Two figures are decisive: safety stock and cycle stock. The latter varies according to daily demand and is modelled statistically by Softeon - for actual inventory as well as target inventory levels.

Inventory Planning & Optimization allows you to determine optimum inventory based on approved statistical models. As a result you minimize stock-out or excess stock situations.

Authorized agents in your company will have real-time survey over the inventory on regional and national levels and can compare them with target inventory levels. On this basis you support the management with reliable recommendations for purchase and production and for decisions as regards inventory transfer.

🚩 Slotting & Optimization:

Boosting warehouse productivity

The module Slotting & Optimization arranges for optimal placement of products at the warehouse. Storage characteristics, user-defined preferences and constraints on product velocity, weight, cubage or storage characteristics are taken into account.

The module Slotting & Optimization leads to a definite increase in productivity of the warehouse. It minimizes picking and putaway travel distances, reduces replenishments and brings forth a balanced workload across zones.

🚩 Asset Tracking & Repair Solution: Managing track carriers superiorly

With the module Asset Tracking & Repair Softeon provides a broad management system for the tracing of track carriers and assets in production and warehouse. Softeon combines in this module an intelligent warehouse administration with all modern techniques to document and trace objects. The equipment includes the support of RFID, bar coding, visibility tools and mobile applications.

The system is exceedingly configurable. The user might select the tracking technology he prefers and define business rules associated with asset management, i.e. the correct handling of pallet jacks or special containers (asset management). What our module can achieve

in Asset Tracking is obvious for one of the world's largest automotive OEM's: their factories use RFID or bar code; wireless mobile terminals are used to initiate inspections; route carriers are operated automatically for maintenance and are supervised a whole life time cycle.



Softeon's team came in and immediately rolled up their sleeves. They became members of our team and wanted our goals to be met. They are an example of a true partnership. The Softeon team added value with their knowledge and were always concerned about giving us superior service. It was like they were an extension of our company."



Mike Wiese,
System Administrator, Technical Program Manager
Dietz & Watson

Proven Implementation

At Softeon implementation is quite deliberate. Our project management stood the test in many a branch and business model.

PHASE 1

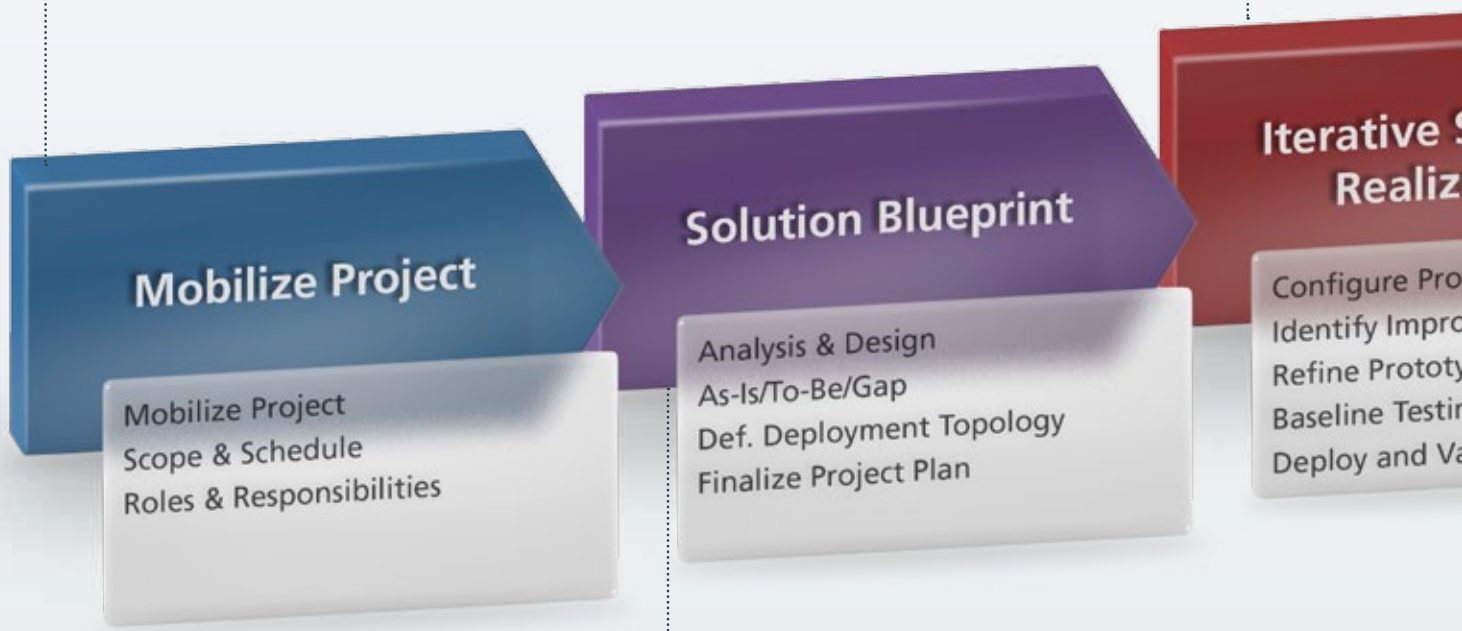
🚩 Mobilize Project - setting the project on track

The first phase is a booster detonation. The target is to set the IT project on the right track right from the start - and then to keep it on that right track. Before the background of your business objectives we define the project scope and set up a schedule for each and every phase. Together with you we define the project team and set up operational procedures, such as communications with internal team members and other stakeholders, who should be updated on the implementation.

PHASE 3

🚩 Implement Solution - realizing

The third phase is crucial: the IT-solution from the previous phase lead to an iterative process Softeon accepts during two weeks. We get a valid feedback from the customer, which we use to improve our work. As a result we get a fully functional solution which fulfills all demands from phase 2. The customer acceptance test.



PHASE 2

🚩 Analyse & Design - analyse the actual status, design the future

In this phase all project-relevant processes in your company are examined carefully. First of all the project team analyses actual procedures. After that it deals with the future: we clarify how the processes should work after implementation. This preset is the guideline for all following steps. Clear statements belong to the result: on business problems the project team has to deal with;

on the worthiness of the solution for your company and on the success factors vital to the solution of partial problems. Last but not least the acceptance of all participants. Softeon cares for a target oriented communication even in this early stage. The aim is that all members of the project team and all other stakeholders fully understand - and agree upon - the solution design requirements.

g the solution

for our customers corporealizes. The requi-
 ready for use software successively. In an
 yo or three Solution Review Workshops
 will be included in further development
 software, which has been tested and
 his IT solution is mature enough for the

PHASE 5

✦ Production Deployment - connecting your software productively

The successful conclusion of an IT project is its deployment into the production environment. At Softeon it is carried out on a safe basis thanks to an attentive preparation. An important part of this phase is the punctual conversion of the necessary data. Simultaneously we transfer the implemented solution to the current support service (Softeon Customer Support). In any case we finalize our project management by the adoption of a completely sustained system in the productive user community.



PHASE 4

✦ Customer Acceptance - testing the production-ready solution

Before Softeon connects an IT solution we check the suitability for daily use. In the course of the User Acceptance Tests (UAT) your personnel will find out if the system copes with their demands. The target of this phase is the full acceptance of the user. It is assured that the software fulfills all acceptance criteria and that your company can realize the aimed for added value on a day to day basis.

Perpetual Innovation

The adaptability of Softeon's logistics solutions allows a rapid and smooth combination with the most diverse material handling equipment and other external subsystems.

✦ Automatic Storage and Retrieval Systems

This interface makes for the integration of automatic storage and retrieval systems, with which companies can improve efficiency and space utilization and error-proof warehouse operations.

✦ Very Narrow Aisle Stapler

Softeon supports VNA (Very Narrow Aisle) operation to optimize space utilization and operation efficiency. Putaway and picking operations are optimized using interleaved task management. Based on the current location of a putaway operator, and evaluating the proximity of pick locations, the next pick task is assigned to avoid empty running and to minimize travel distance.

✦ Continuous Conveyor

Softeon supports automatic conveyor- and sortsystems in order to transport for instance dispatch containers automatically to dispatch zones or shipment pools for special routes. Newsbased protocols grant the status control of the job processing in real-time - error signals included.

✦ Light Directed Operation

Integrating light-directed operations Softeon guarantees the integration of accordingly guided work processes. Commissioning techniques as „pick-by-light“ belong here, or fresh supply operations as „put-to-light“, which can lead to minimizing errors and optimizing productivity.

✦ Voice Operation

Our system permits the connection of voice-based systems for a contactless governing of processes. The error-rate in the picking process is thus reduced and remarkable assets in production can be achieved. Softeon allows for a control of all tasks and operations in real-time, so that additional software for the process management is obsolete.

✦ RFID

With Softeon almost all warehouse functions can be RFID-enabled. This is once more an advantage of our event-centric system-architecture. Softeon transforms RFID-events to application layer events and combines them with functional components. The latter is a decisive factor for a successful application of RFID in picking, replenishment, putaway, cross-docking, shipping, goods issuing.

✦ Weight auditing

The integration of scale controllers serves to avoid errors as regards goods issue. The interface service compares the actual weight of shipment with the expected value. Variances indicate errors. Faulty shipments can be rejected automatically. Valid shipments can be directed to mapped to target carriers according to their actual weight.

Solution Integration

Softeon's integration methodology reduces the cost of integration and minimizes the risk of implementation.

Softeon's module for Supply Chain Management can easily be integrated into ERP systems and be combined with other IT systems. Its advantage is that it minimizes the cost of integration and the risks of implementation.

Softeon takes care of a problemless cooperation of different systems in your company. We support a wide range of integration protocols and provide a powerful set of transformation, mapping and transaction management tools. Softeon's interface services are designed for high performance with error recovery,

transaction tracking, supervision and real-time visibility. The integration of web services is self-evident for us. Softeon is strongly committed to Service Oriented Architecture (SOA).

Technique is a decisive factor of success when IT systems are integrated. Moreover, planning reliability is crucial. Here Softeon offers the maximum. We calculate IT projects on a fixed-price basis and keep an eye on time and budget throughout the whole procedure.

✦ SAP certifies Softeon

SAP® Certified
Powered by SAP NetWeaver®

SAP certified the SCM solutions already in 2005. A frictionless integration into existent SAP systems is warranted. Our interfaces support integration methods as real-time BAPI and IDOC exchange. Softeon's IT solutions can be deployed in the NetWeaver platform and will easily integrate into the ESA adoption path.



✦ Fraunhofer-Institute validates Softeon

The SCM suite of Softeon has been examined closely by the Fraunhofer-Institute for Material Flow and Logistics in 2011. The result is the acceptance into the worldwide greatest synopsis of bidders for Warehouse Management Systems (WMS). The database Warehouse Logistics offers companies a detailed synopsis of presently 98 validated WMS. The validation on the basis of a catalogue of criteria with round about 300 questions is carried out by the Fraunhofer Institute independent of bidders, objectively and quality-orientated.

Rapid Realization

Softeon dedicates itself to the agile software development approach. Advantages are quicker allocation and accurately fitting IT solutions for your company.

The management of supply chains makes different demands on IT systems according to branches. Softeon copes with this by using modern technology as well as special approaches to the implementation of solutions. An important principle is an architecture based on modules and components for our SCM solutions. In design

and implementation Softeon pursues the agile software development approach. This approach leads to a more flexible and slender implementation than the traditional method, which has been felt to be too clumsy and bureaucratic.

Advantages of the agile implementation approach of Softeon

- ✔ We keep the blueprint phase as short as possible. The customer won't have to wait for a final draft. The complete solution arises from an iterative process of cooperation.
- ✔ We offer doable partial solutions as soon as possible. With these we enter the test phase in a practice-oriented way. Thus we find out in a close cooperation with the customer how partial solutions can be optimized in view of the project goals.
- ✔ The project team concentrates perfectly on the project goals while developing software and considers technical as well as economical questions of the implementation.

The software development of Softeon is in the best meaning of word interest driven: Your interest as our customer is crucial for an economically and technologically optimal IT solution for your logistics challenge. The system- and functional tests are carried out at the Softeon Solution Center. The test plan is

compiled in cooperation with the project team of your company. When it comes to the integration- and acceptance-test by future users you can also count on the full support of Softeon. Naturally, the planning of the functional, technical and operative applicants remain in your hand.

Individual Branches

Special branches need special solutions. Softeon offers the tailor-made logistics software for your company.



✦ Exemplar: Beverage Industry

Softeon concentrates on high velocities of transactions, better storage space capacity utilization and route management. Receiving and picking can be supported using voice or radio-control (RF-technology).



✦ Exemplar: Consumer Goods

Softeon offers progressive event- and taskmanagement, optimized order picking, replenishment, supply and other warehouse activities beyond link of automatic conveyance.



✦ Exemplar: Third-Party-Logistics-Provider (3PL)

Third-Party-Logistics-Providers enjoy highest flexibility with Softeon: rapid intrusion of new customers, a highly powerful, rule-based account module with all possibilities for optimized revenue models. Moreover, full integration capacity for electronic data transfer (EDI). With our IT solutions logistics providers have a bird's view over their world and their customers.

”

From our planning phase to implementation to day-to-day operations, Softeon has been a tremendous company to work with. We feel that we are a better company today than we were before we started the implementation.”

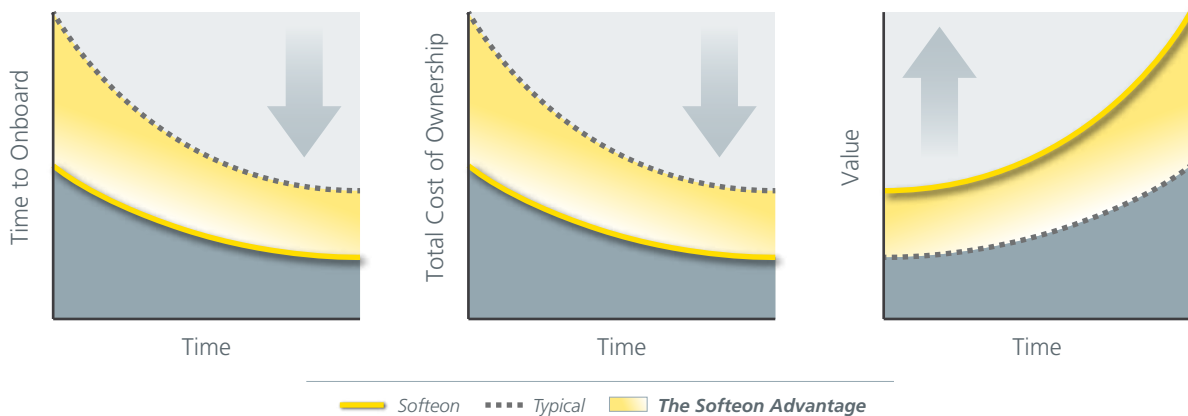


David S. Carter,
Operations Director,
Atlantic Dominion
Distributors

Precious Solution

With Softeon you realize golden chances. Our customers reduce logistics costs, improve efficiency and customer service.

🚩 The Softeon Advantage: Multi-Dimensional Benefits



We are aware of what our customers expect: your company needs stalwart results. We understand that these are operative progresses in logistics on a safe calculation basis.

Talking about calculable results we are saying exactly the following: Softeon offers implementation and integration of SCM-systems at a fixed price. This goes to show that with Softeon you can calculate on-time and on-budget. Safer calculation is impossible.

Our promise to perform is a matter of our values. Softeon disposes over a technical basis, with our webbased and service-oriented IT architecture, which allows a calculable implementation. The flexibility of our technique guarantees a rapid integration into the IT systems

of our customers. Softeon dedicated itself to a straightforward business policy ever since its foundation.

The multitude of successful implementations bears out our strategy. Customers praise our fidelity to budget and schedule. Moreover they report on reduction of cost in warehouse and distribution, gains in warehouse output and betterment of customer services. The deployment of the SCM-Suite of Softeon leads regularly to gains in efficiency and the power to compete.

Softeon's SCM-solutions distinguish themselves by a high capacity of integration with old and/ or individual systems already at use in the companies as with modern ERP-systems.



With Softeon your company will find a steady partner for the IT support in the supply chain segment. Enquire about us with other companies, ask them about their experiences with us! We invest a lot, we want our customers

to be satisfied with our work in any project phase - starting from the first contact over implementation up to support-service.

🚀 Rapid Rentability

Softeon is interested in problems because we are looking for intelligent solutions which pay themselves off for our customers. An investment has to be worthwhile. The quicker the better.

Softeon always keeps an eye on the return on investment (ROI). To be precise: our staff analyzes all relevant procedures at your company, agrees upon processes with you and configures the IT landscape in an income return oriented way. The overall result regularly exceeds the targets of our customers.



With Softeon we will be able to on-board new distribution customers quickly, and determine how to best use our network to meet their needs. The best part is that we didn't have to wait months or years to replace our WMS, the benefits will be immediate."

Sony DADC

Jeff Dodson,
CIO, Sony DADC

Softeon – Innovative Supply Chain Solutions

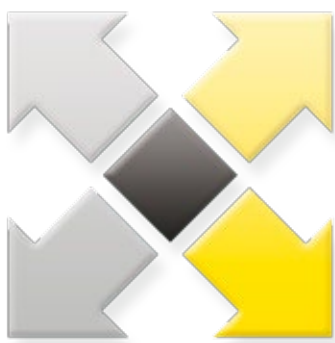
Softeon is a dynamic company: innovative products, flexible service, planful growth in its own case.

The Better is the enemy of the Good - this motto pins Softeon's functioning down to the point. We are a dynamic team of experts enthusiastic about three ways: about logistics, about software and about finding the best IT solution for a logistics challenge. With this demeanor we already reached a lot for our customers as well as for our company.

Softeon has been founded in 1999 by Gana Govind, a visionary entrepreneur with more than 25 years of experience in development and implementation of logistics software in enterprises such as Chrysler and L'Oreal.

Softeon puts customer orientation in capital letters. „The satisfaction of our customers is our absolute priority“, says chief executive Gana Govind. „If we want to gain the confidence of our customers enduringly

this automatically means that we have to crack the hardest nuts in supply chain management and deliver an economic solution as quick as possible. We cope by hiring the best specialists on the market.“



The fact that Softeon follows the right approach is proven by the great demand and acceptance on the customer side. Since its foundation Softeon is an expanding company. In 2010 our growth rate was more than 20 percent.

Thereby our company gained the reputation to be an employer who is attractive for highly qualified and highly motivated employees. In 2011 already more than 300 specialists for IT and logistics work for a joint target: Softeon shall become the leading bidder of Supply Chain Management. We are on the best way.

➤ Softeon convinces Gartner

Softeon has been rated by Gartner for the first time in 2010 in the „Magic Quadrant for Warehouse Management Systems“. The globally leading enterprise for IT advice and research regards Softeon as the motor for innovation. Softeon would challenge bidders of customary WMS by a technology which looks at the future. Another quality of Softeon: when it comes to the development of new solutions, so the specialists of Gartner, Softeon is not only innovative in the realization but also quicker than many bidders.



Globally Softeon has implemented more than 100 IT solutions. Every year 10 to 15 new applications are added. Upward trend. Among our customers in Europe are enterprises like Sony and DB Schenker.

Softeon is an international company. Besides our headquarters in Reston near Washington D. C. (USA) we have places of business in South America (Lima/Peru) and in Europe. Since 2011 Softeon has an affiliate in Germany. The Softeon EMEA GmbH in Dortmund attends our customers in Europe.

Softeon's software smithy is in India. In Chennai a good 260 (08/2011) software engineers, logistics specialists, quality managers keep Softeon's IT suite up-to-date. Innovation and further development of our own products are written in capital letters at

Softeon. Each year we invest 20 percent of our business volume into research and development.

Who speaks of customer orientation has to offer real service. Softeon keeps a Customer Support Center with a staff of 100 members who care about wishes, questions and concerns of our customers. 50 more employees in quality management are responsible for the frictionless functioning of Softeon's IT systems.

The company Softeon is a 100 percent property of the family of the founder.



„Since the introduction of the new On-Demand-Service the implementation of a WMS is quicker than the buying of a scanner. In small and middle projects we can adapt the system in a few days to customer demands. DB Schenker and Softeon have arranged an attractive license model, which offers our customers an excellent price-quality-relation.“



Michael Brandes,
Senior Vice President
Logistics Engineering,
DB Schenker Logistics,



Softeon

Softeon EMEA GmbH

Martin Schmeisser Weg 6
44227 Dortmund

Tel. 0800 344 11 66
kontakt@softeon.de
www.softeon.de