

Westernacher Solutions for Logistics Service Providers

We optimize your **Supply Chain** with **SAP Solutions**



Transport Planning, Execution, Monitoring and Settlement

Transportation Management with SAP TM

Improving operational efficiency while ensuring service excellence

Logistics Service Providers (LSP) are constantly under pressure to survive in a highly competitive transport business environment. The LSP industry is mainly marked by increased competition for more demanding customers, new technologies and increased regulations. All of these factors combined impact revenue and margins as well as the ability to provide customers a superior experience. To retain the most valued customers and to create new offerings to find additional revenue streams, LSP's need a solution that allows them to operate flexibly and efficiently - **SAP TM**.

LSP Executives are faced with numerous challenges every day that need to be addressed effectively:

Challenges for LSP Executives

- Managing transport logistics networks in a **holistic fashion**
- **Minimizing risk factors** across the supply chain
- **Reducing operational costs** and better understanding of cost structures
- Ensuring **best possible utilization** of assets
- Achieving **customer service levels while remaining flexible** and responsive to unexpected events
- **Ensuring compliance** with all regulations and policies

With over 40 years in the consulting business and in-depth SAP Supply Chain Logistics experience within the LSP industry, Westernacher is your right partner to take on these challenges.

By implementing SAP's Transportation Management solution, your company can quickly materialize essential benefits when it comes to optimising your transport business:

Key Benefits with SAP TM

- **Improved on-time delivery performance** through better multi modal planning and higher transparency.
- **Reduced transportation costs** by determining the most effective transportation modes and routes, including the sequence of pickups and deliveries.
- **Improved transportation efficiency, readiness and agility** by operating, orchestrating and monitoring transportation processes in a highly automated way.
- **Better transport vehicle utilization** through better planning and carrier collaboration.
- **Improved control across the entire transport management business** from quoting, to planning, execution, monitoring and settlement through higher visibility and traceability.

Westernacher Solutions for Logistics Service Providers

We optimize your Supply Chain with SAP Solutions

SAP Transportation Management (TM)

SAP TM enables Logistics Service Providers to manage inbound and outbound, domestic and international freight on various transportation modes in a single environment and provides improved traceability and visibility of orders, shipments, items, and logistics processes.

Overview of core processes

Capacity Procurement & Network Planning

- Sailing Schedules
- Ocean Pre-Bookings
- Carrier Freight Agreements
- Rates and Service Level Maintenance
- Capacity Monitoring

Order Management

- Manual and Automated Planning and Dispatching
- Routing Selection
- Booking with Gateway
- Rating Selection and Customer SOP Assignment

Freight Execution & Monitoring

- Logistics Execution
- Compliance Checks and Data Validation
- Transportation Status Visibility and Monitoring
- Capacity Monitoring Interaction

Customer Billing & Freight Settlement

- Freight Agreement Audit and Recalculation
- Customer Charge and Tariff Management
- SAP ERP integration - Forwarding Order, Freight Booking and Freight Order Settlement from TM

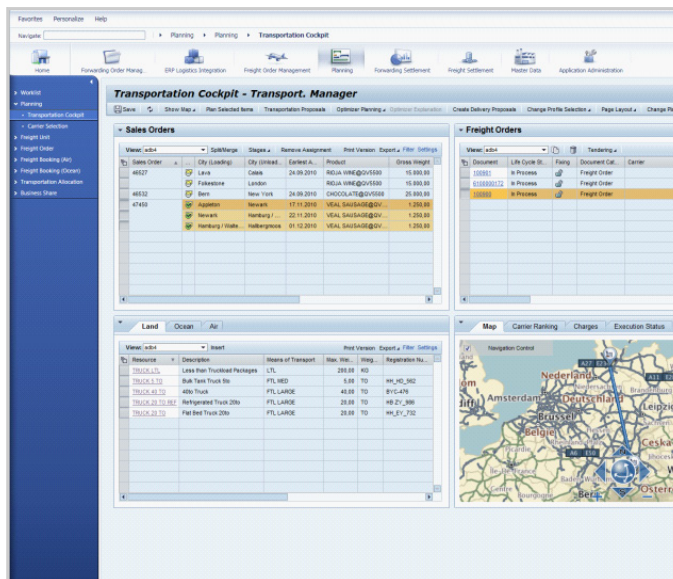
Analytics and Reporting

Event Management

Import/Export, Dangerous Goods and Compliance

Document and Output Management

Integration and Connectivity



Want to find out more?

Call us to set up a free consultation. We will review your specific requirements and demonstrate how **SAP Transportation Management (TM)** can optimize your transportation processes to create business benefits.

Your contact person:



Christian Schmaus

Phone: +49 6222 9221-0

Westernacher Business Management Consulting AG
scm@westernacher.com · www.westernacher.com

Westernacher Business Management Consulting AG
Muenchaeckerweg 1 | 69168 Wiesloch | Germany
Phone: +49 (0) 6222 92 21-0 | Fax: +49 (0) 6222 92 21-11
E-Mail: info@westernacher.com | www.westernacher.com



Westernacher
Innovating Business & IT