



E'wms[®], Egemin's intelligent warehouse management system

WHAT IS E'WMS[®]?

The Egemin Warehouse Management System (E'wms[®]) constitutes the perfect link between your logistic environment and the equipment available in your warehouse. E'wms[®] is a modular system presenting the ideal solution for your production or distribution centre.

MODULAR SETUP

E'wms[®] consists of the two following main modules:

- inventory management
- order management

Furthermore, E'wms[®] comprises a state-of-the-art warehouse control system (E'wcs). It can be extended, for example, with a tracking

& tracing module, a logistic optimisation module allowing for more efficient use of resources, inventory and locations. Additionally, E'wms[®] provides a flawless link between your warehouse and (existing) administrative systems.

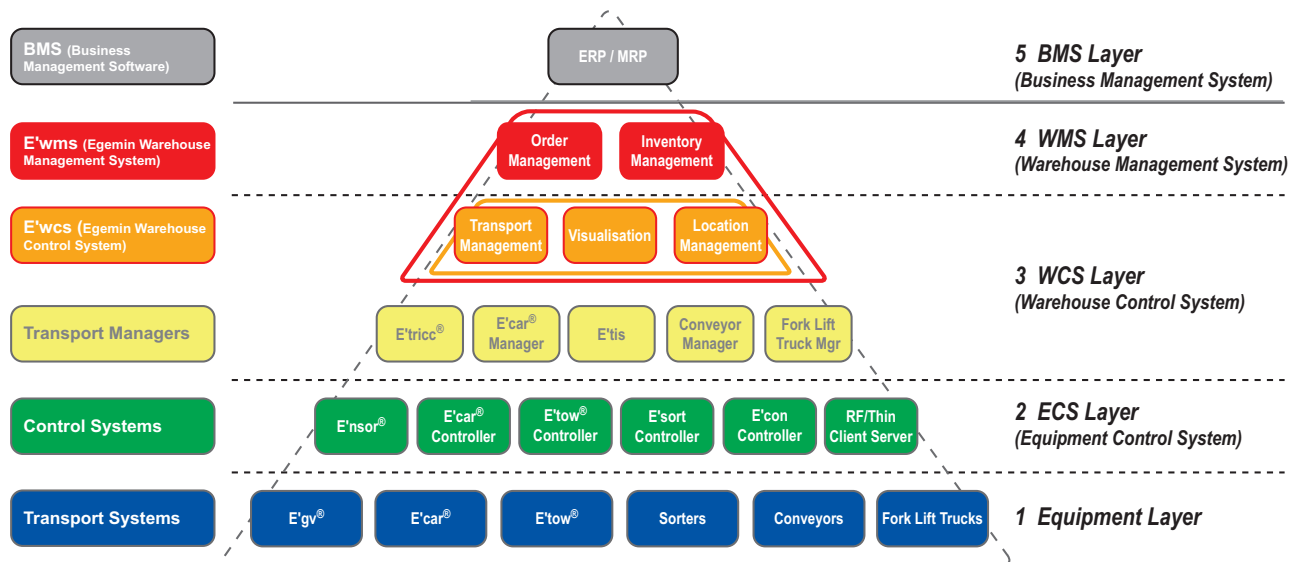
CORE FEATURES

- Receiving & inventory management: inbound of products in warehouse
- Replenishment of (dynamic) picking zones
- Inventory allocation: assign stock to orders
- Order assignment: assign orders to resources or work stations
- Load balancing and control of picking posts and / or order picking resources
- Consolidation and dispatch labelling.

INVENTORY MANAGEMENT

The inventory management module stores the received products taking into account the carrier and compartment number, product attributes (owner, lot, quality, abc qualification), storage zone, etc. Cross-docking –moving the products of a specific customer from reception directly to dispatch– can be opted as well.

Available inventory in the warehouse is allocated to order lines based on several intelligent allocation algorithms: least remaining stock per carrier, FIFO, FEFO, capacity distribution & optimisation, etc. Orders will be automatically reallocated to another carrier in case of unexpected shortages.



E'wms[®] and E'wcs in the five-layer automation triangle



ORDER MANAGEMENT

The order management module assigns orders to resources in a controlled way, based on priority, due-out time, order reception time. E'wms® supports order picking concepts like single order picking, batch picking and cluster picking. Furthermore, optimisation algorithms can be implemented for these concepts to fine-tune the product flows.

E'WMS® & E'WCS: A PERFECT MATCH

E'wcs and E'wms® rolled into one makes your warehouse run smoothly and increases its efficiency. E'wcs is our state-of-the-art warehouse control system comprising a transport and location management module. It constitutes the link to many material handling systems.

E'wcs is part of the standard E'wms® suite, but can also work independently from E'wms®.

E'wcs receives orders from the E'wms® software, splits them up in a number of smaller suborders per transport means (e.g. conveyors, cranes, sorters, forklift trucks, etc.) and manages the orders fully automatically.

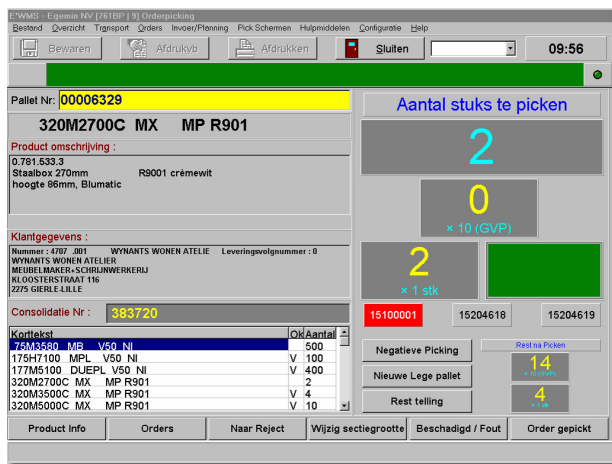
ADD-ON MODULES

- Track & Tracing Module
- Statistical & KPI Management reporting
- E'wms® extended access rights
- Equipment alarm management
- Visualisation
- Advanced intake goods reception
- Location and stock optimisation
- Satellite storage

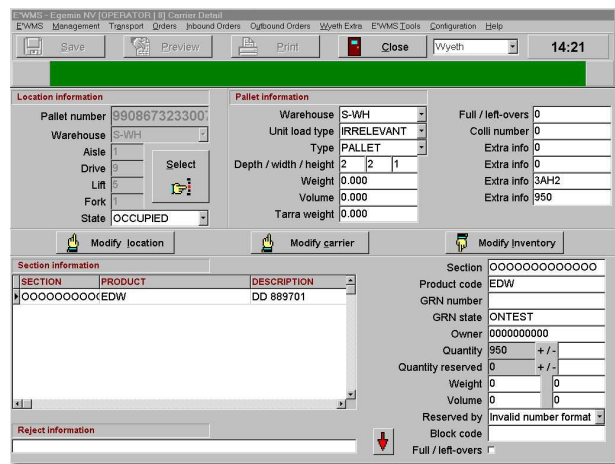
- Vertical lift or paternoster storage
- Pick-to-light support
- Put-to-light support.

A WEALTH OF BENEFITS...

- Fully compatible with multi-warehousing
- Designed for both automatic and manual warehousing
- Modular software concept for quick project configurations & faster time-to-market
- Integration in one system controlled by Egemin (sorters, conveyors, E'gv®s, control software, tracking & tracing software)
- Seamless integration with all common ERP software (SAP, Baan, JD Edwards, Navision, etc.), specific client IT platforms and Business Management Systems.



E'wms® operator picking screen displaying order overview, customer information, product details, customised to client-specific environment.



Inventory management screen visualising location data, carrier details, inventory information.