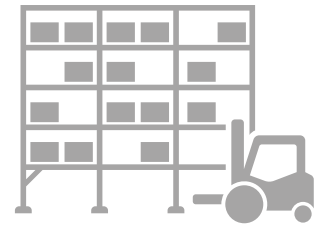


PSIwms

Release-ready, user-friendly, flexible configuration



PSI 



PSIwms

The warehouse management system for optimising your intralogistics

PSIwms plans, manages and optimises business processes in intralogistics. To this end, our product offers modules with exclusive, future-oriented developments. PSIwms already supports all relevant warehouse forms, types and technologies in a standard system. It can also be used in a production-related warehouse, i.e. a dispatch warehouse or distribution centre. PSIwms is equally suitable for small warehouses, and those which are large and complex.

Thanks to continuous further development, with PSIwms you are release-ready - regardless of the degree of customization - and always at the cutting edge of technology. You get a high-performance system, which can easily and flexibly be adapted to any relevant needs, as a result of its modular structure. This follows the principle of "as much as necessary, as lean as possible."

When it comes to your project, we will give you the reliability your logistics processes deserve: we have decades of experience and have already completed several hundred successful warehouse projects.



Includes Best Practice for

- + Automotive and Industry
- + E-Commerce and Retail
- + Logistics service providers
- + Spare parts logistics



Your benefits

- + Best practice approach ensures project realization and execution in time & on budget
- + Standard interfaces enable fast and safe commissioning
- + Fast and secure data exchange with HOST system through integrated automatic test
- + Flexibility and adaptability for your individual needs and processes
- + Investment security through pioneering JAVA technology and permanent further development (annual release)
- + Powerful and stable even with high system loads
- + 24/7 support, individual service level agreement, own data center
- + More efficient processes through self-configuring system, depending on events (e.g. volume, dates, ...)



PSIwms architecture

Of course, our PSIwms solution complies with the VDI 3601 guideline regarding the tasks and performance areas of an IT system for warehouse management. An overview of all PSIwms functions can be found here:



Additional functions according to VDI 3601

Batches	Best before dates
Cross-docking	Package optimisation
Dock & yard management	Production supply and removal
Double-deep/multi-deep storage	Resource planning
Hazardous goods	Returns
Hazardous substances	Serial numbers
Weight control	Warehouse reorganisation
Handling units management	Forklift guidance system
Kit building	Value-added services
Consignment	Vendor managed inventory
Empties and load carriers	Scrapping
(Multiple) client capability	Customs
Multi-warehouse handling capability	

Interfaces to

ERP systems	Pick-By-Voice	MFR / MFS
Shipping systems	Pick-By-Light	Pick-By-Vision
Localisation	Web service/ restful	
Driverless transport systems		

PSIwms additional functions

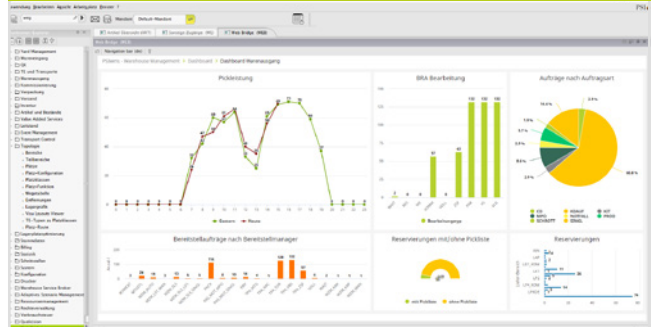
Activity tracking	Image capture
Adaptive order start	Modelling
Adaptive scenario management	Packing units
Archive	Picking batch
Automated testing	PSI-Click-Design
Stock separator plus	Stocklist management
Billing	Time slot control / Slot management
Dashboard	Visualisation of incoming goods (OSM)
Digital twin	Warehouse service broker
Event management	Warehouse visualisation
Excise Tax	

Features unique to PSIwms



- + Release-ready, regardless of the level of customisation
- + PSI-Click-Design – fully adaptable and scalable user interface
- + Process-oriented warehouse visualisation
- + Warehouse service broker
- + Adaptive scenario management
- + Modelling at dialogue level or offline
- + Customisable drill-down cockpit
- + Rule bases for warehousing and removal strategies
- + Automatic testing
- + Empty run optimisation by means of fuzzy logic
- + Adaptive order start
- + Managing yard logistics
- + Customer programming via a web service

New in Release 2022

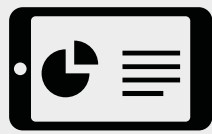


- + **Cloud-based e-commerce solution:**
Designed specifically for e-commerce and omnichannel processes. Preconfigured returns workflows and masks already available.
- + **Improved Graphical User Interface:**
Easily customization of the user interface to individual needs.
- + **Stacker control system Transport Control:**
Transport Control Service (TCS) for planning and controlling intralogistics transport routes.



Innovative and future-proof.

The development of PSIWms takes place in close exchange of ideas with our customers. One specific way we do this is with the PSIWms Competence Group and the annual PSIWms User Day when we offer the community a platform for discussion, the opportunity to collaborate and create ideas and product development.



mobile



smart



integrative



Each year, PSIWms invests over 10 % of its turnover into research and development for innovation and product refinement.

Technical features

- ✓ Standard interfaces for direct connection to SAP (and other ERP systems) as well as shipping systems and driverless transport systems.
- ✓ Cloud-enabled and available from PSI data center
- ✓ The hybrid, parallel use of different radio data transmission technologies
- ✓ A future-proof, expertise-based framework
- ✓ Automatic system testing for processes and functions
- ✓ Certified data security (ISO 27001)



PSI Logistics GmbH

Dircksenstraße 42-44
10178 Berlin (Mitte)
Germany

Phone: +49 30 2801-2850
info@psilogistics.com
www.psilogistics.com



Other offices

Aschaffenburg (Germany)
Dortmund (Germany)
Posen (Poland)

Sources: Pictures
Cover page /© panuwat phimpha - shutterstock.com edited by © PSI Logistics GmbH;
Inside /© PSI Logistics GmbH, © 4774344sean - Can Stock Photo Inc.

© 2022

PSI 