

TECHNOLOGIES



INNOVATION  
FOR  
BUSINESS-  
SPECIFIC  
SOLUTIONS



 **A-sis**  
A *SAVOYE* COMPANY

# FROM VIRTUALITY TO REALITY

# A-SIS VIEW

## **OBSERVATION**

*A logistics platform uses a wide range of equipment and information systems. They interact and communicate with each other. To supervise them, managers must be able to access each system independently.*

## TECHNOLOGICAL INNOVATION...

A-SIS VIEW offers an **all-inclusive 3D display solution** enabling you to supervise and manage any logistics environment.

A-SIS VIEW **brings together every type of information** (production data, alerts, etc.) and displays it all in real time, while geolocating each piece of data.

As such, managers have a **3D environment** enabling them to monitor every aspect of their activity.

## ... LINKED TO

- **Computer systems:** WMS, WCS
- **Computer equipment:** tablets, smartphones, workstations, embedded terminals
- **Printers and access points**
- **Connected objects:** fire-detection systems, thermometers, secure-area access systems, electrical relays, etc.

## EXAMPLES OF APPLICATIONS

This innovative technology is aimed at all people working on logistics platforms.



### **Logistics managers**

- Replay a sequence of the activity
- Anticipate problems
- Accelerate learning



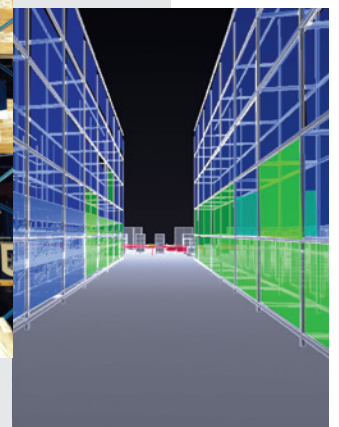
### **Technicians and operators**

- Geolocation of equipment faults or breakdowns
- Guide technicians to the specific place where repair/maintenance operations are required



### **IS Managers**

- Pool human resources for maintenance and supervision tasks





# AND THE TECHNOLOGIES USED



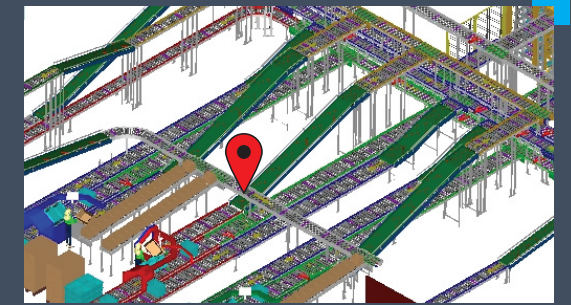
## “Multi-mode” voice-directed solutions

- A voice-directed solution that can be used in all warehouse processes and which simultaneously integrates voice command, keyboard input and bar-code reading using the same terminal.



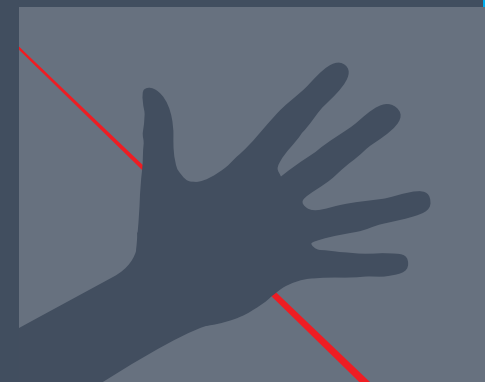
## Heads-up display

- This technology displays information on a device (bracelet, pocket projectors, heads-up displays, etc.) and allows users to keep their hands and eyes free. It assists operators using "augmented reality". Combined with advanced input systems, such as the use of video cameras for gesture recognition, this system can manage a complete process in a warehouse (storage, picking, etc.).



## Geolocation

- This technology locates the position of an operator or piece of equipment inside a building with high precision. The system combines several technologies and makes it possible to guide staff in the same way as a GPS application, thereby optimising operators work (travel time, combination of missions, breakdown of resources). The system also contributes to staff safety by preventing accidents: direction of traffic, restricting an operator to a certain perimeter, alert of presence in an area, etc.



## Light curtains

- Light curtains measure distances using light beams. Breaking a beam enables validation without contact (picking, manual sortation, placing documents, etc.), the location of a gesture or the measurement of an object (product, pallet height, etc.).

## Light displays

As a specialist in retail logistics, we provide order-picking solutions using light displays.

- Displays on trolleys for “multi-order” picking.
- Displays on fixed facilities for picking or manual sortation.

Today, this technology is increasingly used in the multi-channel or health sectors.



## Light strips

- As with displays, we can integrate LED strips to indicate where users should pick. The number of LEDs lit up indicates the location and size of a slot. This is a low-cost solution compared to conventional systems and offers an extremely rapid ROI.



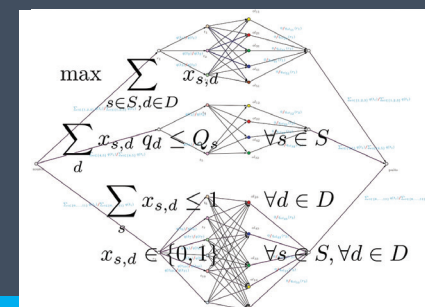
## Put-To-Light Trolley

- Management of trolleys using displays for secure, optimised multi-order picking.



## Data\_MANAGER®

- Data\_MANAGER® is an automatic system for measuring the dimensions and weight of items, and taking pictures. It simplifies repetitive measurement operations and fastidious calculation and weighing operations. Linked to a WMS, Data\_MANAGER® automatically records reliable, accurate logistics data in the item database. Several solutions and technologies can be implemented depending on the type of product to be measured (shape, size).



## Operational research

- Operational research is an area of applied mathematics for designing efficient algorithms for decision-making in order to deal with optimisation problems that are too complex to be managed using conventional methods (automatic launch, scheduling tool, dynamic routing calculation, etc.).

A-SIS is an **active member of ROADEF** (The French Society for Operational Research and Assistance in Decision-making).

# WHAT ARE THE OBJECTIVES OF INNOVATIONS?

# 1.

## Innovation is not about the technology itself but its applications

A-SIS is more than just a software publisher. We have an integrated Innovation Department that has been designing and creating market-acknowledged order-picking tools for many years. The department has an ambitious yet realistic vision: beyond the purely technical aspect, A-SIS aims to provide its users with immediate benefits through its innovations.

# 2.

## Drawing on strategic partnerships

In order to innovate, software publishers need to work with and integrate technologies from third parties. They must also be able to test concepts. With this in mind, A-SIS' Innovation Department has established various strategic industrial and institutional partnerships.



# 3.

## Moving from prototypes to products

It is by testing and then full-scale implementation on real customer cases that we are able to validate the real benefits of an innovation and to move from a prototype to the final product.

Below is a testimony from our customer ID Logistics, concerning our latest innovation: A-SIS VIEW.

## WHEN INNOVATION PRODUCES TANGIBLE BENEFITS

Testimony from **Romain Dellamonica**,  
Innovation Manager at ID LOGISTICS

*A-SIS VIEW is a new all-inclusive 3D display system for warehouses that integrates all systems and connected objects. For us, this is a break-through innovation for managing our operations thanks to an original 3D data display. It is a tool that can analyse the past, present and future through its real-time data management and capacity to replay data history. Thanks to this real-time information, we have noted improved responsiveness and flexibility in the warehouse.*

*The data history also enables us to replay scenarios from different view points with filters adapted to the subject being analysed. Lastly, we can simulate modifications in order to find the best solutions in a non-invasive manner.*

*The innovative aspect of this product lies in the fact that it links all the computer systems together and offers a 3D environment that is flexible and easy to use.*

*Thanks to this tool, we are changing the way we manage the warehouse. We are moving from a world of figures and dashboards to a real, dynamic view of the activity on our screens.*



ID Logistics is an international contract logistics group present in 14 countries. With a portfolio of customers, balanced between industry, retail logistics and e-commerce, its service offer is characterised by a high level of technology and a resolutely innovative and sustainable approach.

ID Logistics recently deployed "A-SIS VIEW" in one of its multi-channel sites.



# LOGISTICS MANAGER SUITE

A RANGE OF SOLUTIONS

## APS

to optimise stock levels and manage procurements

## OMS

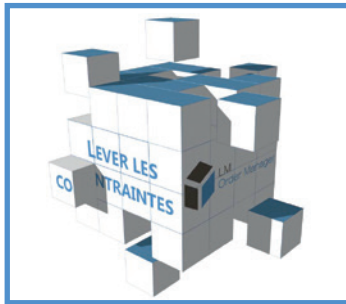
for the management of client orders

## WMS + WCS

to optimise all the logistics processes of a warehouse

## TMS

for organising transport, whether using an in-house fleet or sub-contractor



## A-SIS SERVICES

### Business expertise & Integration

A-SIS has extensive expertise to help guide you through each step of your development. Our team offers process and technical knowledge to advise on best practices for your business sector. The team coordinates services, studies, recommendations, system configuration, testing, training and go-live assistance.

### Innovation and R&D

Innovation is at the heart of our concerns and of our organisation. More than an editor, we are technology integrators dedicated to providing optimal business solutions. Always attentive to our client's needs and expectations, we offer annual updates to our software that incorporate new customer requirements and our technical innovations.

### Client service

Organised according to ITIL recommendations, our client service team includes a 24/7 help desk to provide efficient operational support to our customers world-wide.

### On-Premise, Hosted, or On-Demand

Whether you are looking for a traditional on-premise, hosted, or an «on-demand» software configuration, A-SIS has a solution to meet your specific needs.

To learn more,  
[contact@a-sis.com](mailto:contact@a-sis.com)  
 T +33 (0)4 77 49 47 00  
[www.a-sis.com](http://www.a-sis.com)

